

# Sea Cliff

738  
EL CAMINO  
DEL MAR

Proudly presented by:

**MALIN GIDDINGS**

415.531.5033

**MAX ARMOUR**

415.290.6058

*Representing the City's most  
distinctive properties*



**sf**properties.com

738 El Camino Del Mar

SEA CLIFF  
View Villa

Table of Contents:

5 Overview	
6-7 Main Level	
8-9 Upper Level	
11 Lower Level	
14-15 Floor Plans	



### Offered at \$5,995,000

This fine residence evokes southern Spain from the classic red tiled roof to the play of light and shadow on the planes of the terracotta façade. The fine wrought-iron work and lantern lighting reflect a touch of the Moorish influence. The exquisite landscaping from curbside and along the gated herringbone brick walkway to the formal courtyard entry offers a warm and inviting welcome.

The extraordinary views from the public rooms and master suite encompass the western perspective of the Golden Gate Bridge and Marin headlands to Baker Beach and the Presidio. The changing colors of the ocean and sky from dawn to dusk provide a living palette.

### ABSTRACT

- Built in 1927
- Major remodel 2009
- 4 bedrooms, 3.5 bathrooms
- Living room, formal dining room
- Family room
- Office
- Wine cellar
- 2-car s/s garage



## Main Level:

Gracious split levels on the main floor define the public spaces. Tall ceilings and doorways, expansive picture windows, custom lighting and polished dark hardwood floors exude an aura of quiet elegance.

The elegant ENTRANCE HALL features a tall wood carved door with arched transom and striking cross barrel vaulted ceiling with chandelier.

Step into the dramatic view LIVING ROOM with tall beamed ceiling and handsome carved stone fireplace. Delicate wall sconces provide intimate lighting while professional gallery lighting focuses on large canvases. Three pairs of tall arched French doors open to the expansive balcony from which to enjoy the ocean breeze and views of the Bridge and Marin headlands.

A gracious terrazzo staircase leads to the exquisitely landscaped PATIO & GARDEN. Herringbone brick and gravel contrast the soft textures of sculptured green and silver hued plantings and flowering bushes. The path leads to the secluded pergola, a quiet place to enjoy the stunning view and sounds of the surf.



Returning to the public rooms, the elegant DINING ROOM comfortably seats a large dinner party. An expanse of mirrors reflects two oversized Moorish lanterns and the impressive water view.

The well laid out KITCHEN is designed for family style living. White baker's marble counters, custom white enamel cabinetry (some with glass fronts) and large PANTRY provide efficient work and storage spaces. The built-in leather bench seating in the BREAKFAST AREA provides a cozy corner for daily dining and opens to the large family room.

Top of the line appliances include:

- Wolf cooktop with four burners, grill and griddle
- Wolf ventilator
- Miele double ovens
- Sub-Zero refrigerator/freezer
- Dishwasher & disposer

The adjoining spacious FAMILY ROOM features a stone fireplace and French doors which open to the sunny GARDEN providing an idyllic country setting for delightful family and social gatherings.

The designer POWDER ROOM completes this level.





## Upper Level:

Ascend the stately staircase with art glass sidelight and lantern lighting. French doors open to the balcony overlooking the courtyard entry.

The very private and luxurious MASTER SUITE features a beamed ceiling with hand painted motifs, stone fireplace and built-in display for objects d'art and books. Upholstered bench seating at the picture window provides a dramatic view reading place.

The view marble BATH is a virtual spa with free-standing sleigh tub, separate glass enclosed rainfall shower, double mirrored vanities with sconce lighting, WC and all Waterworks nickel fittings.

The custom DRESSING ROOM provides extensive wardrobe and accessories storage for all seasons.

The adjoining view OFFICE has built-in cabinets for files and books and a handy bar refrigerator.

A large sunny BEDROOM with built-in bookcase and study alcove features a balcony overlooking the front garden and lovely El Camino del Mar street scape. A designer slate BATH with rainfall shower adjoins.

A LAUNDRY ROOM with stacked washer/dryer and additional attic storage space complete this level.





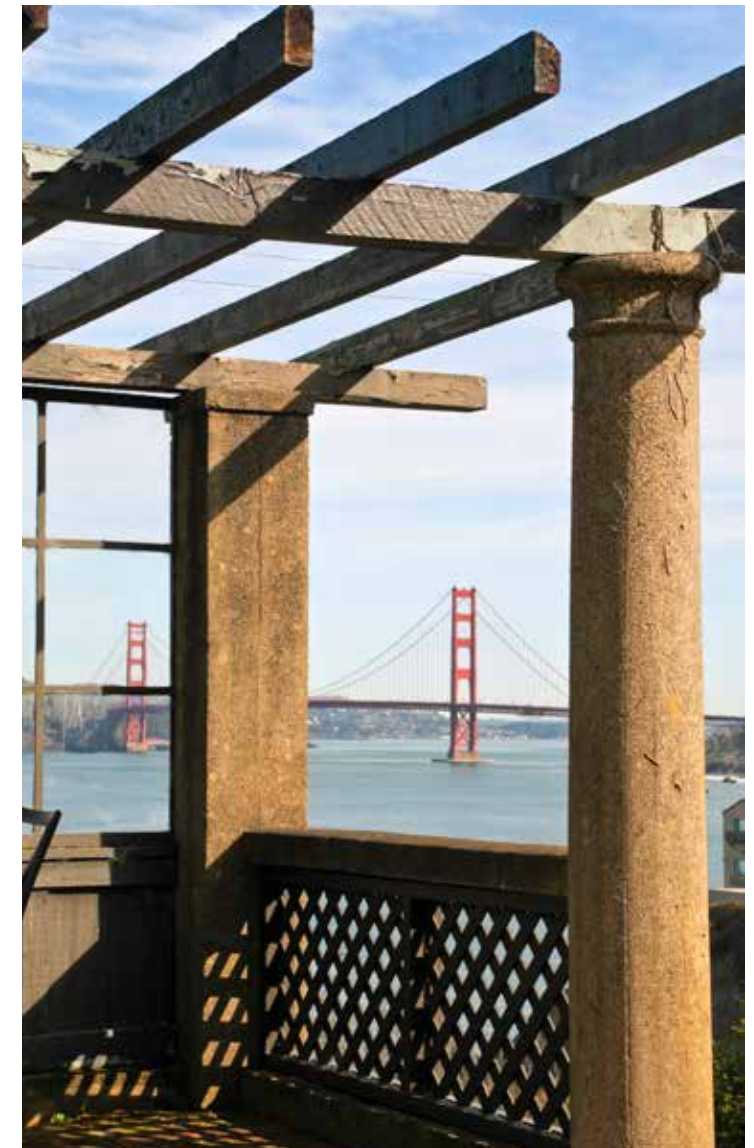


## Lower Level:

A spacious guest BEDROOM with study area enjoys the north view and accesses a marble and tiled BATH with rainfall shower.

Another large BEDROOM with clay tiling is ideal for guest quarters or a music/sitting room. A WINE CELLAR adjoins.

The mechanical, storage and inside access to the two-car side-by-side GARAGE completes the floor plan.



This information was supplied by Seller and/or other sources. Seller & Broker believe this information to be correct but have not verified this information. Seller & Broker assume no legal responsibility for the accuracy of any information provided herein. Buyers should investigate these issues to their own satisfaction.





**Other:** \_\_\_\_\_

- Exclusions to the sale: 2 light fixtures in the dining room, TVs in the kitchen & media room
- Taxes will be reassessed upon the sale to approximately 1.1718% of the purchase price.
- Prospective Buyers are advised to review, prior to any offer, the Property Disclosure Package available on request.

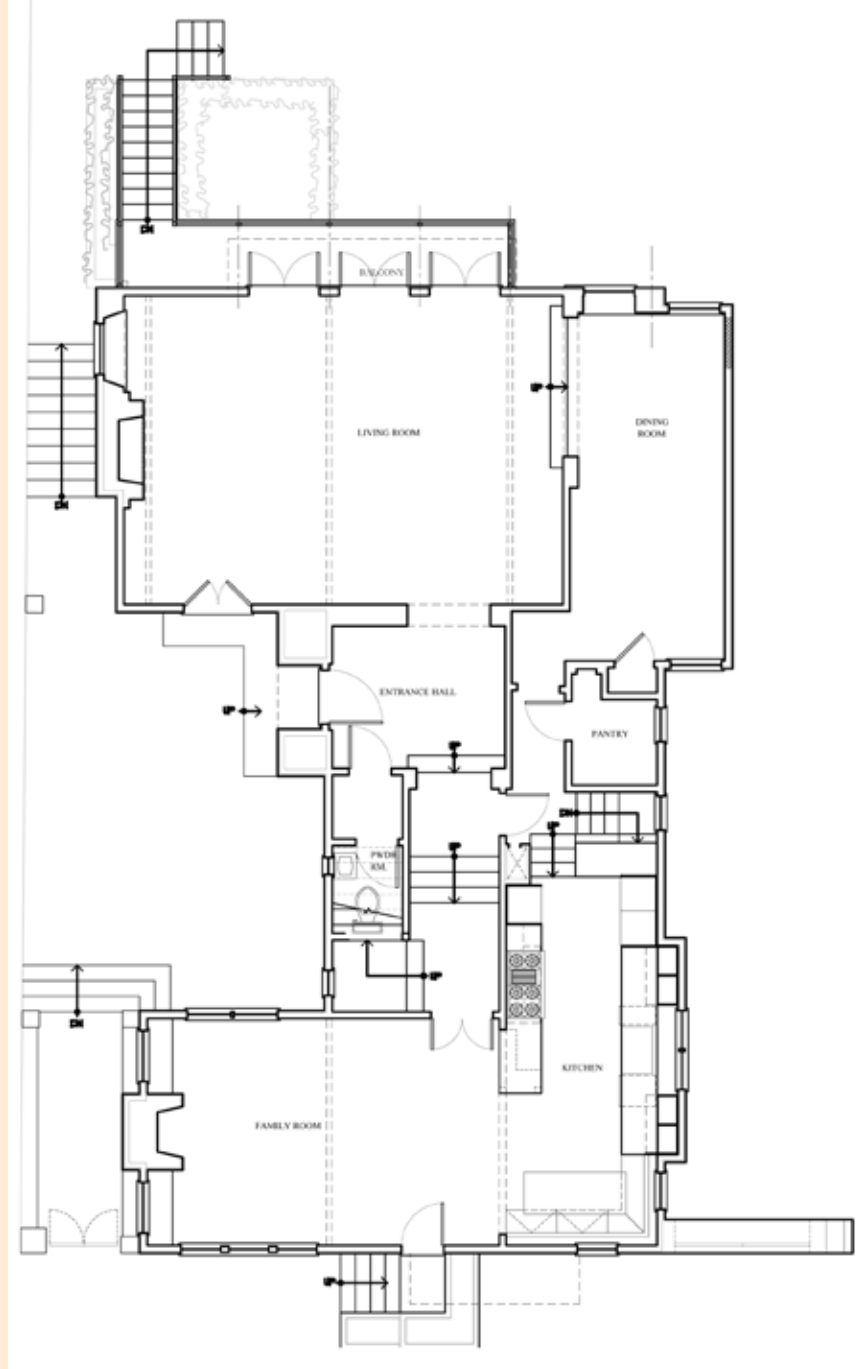






Floor Plans:

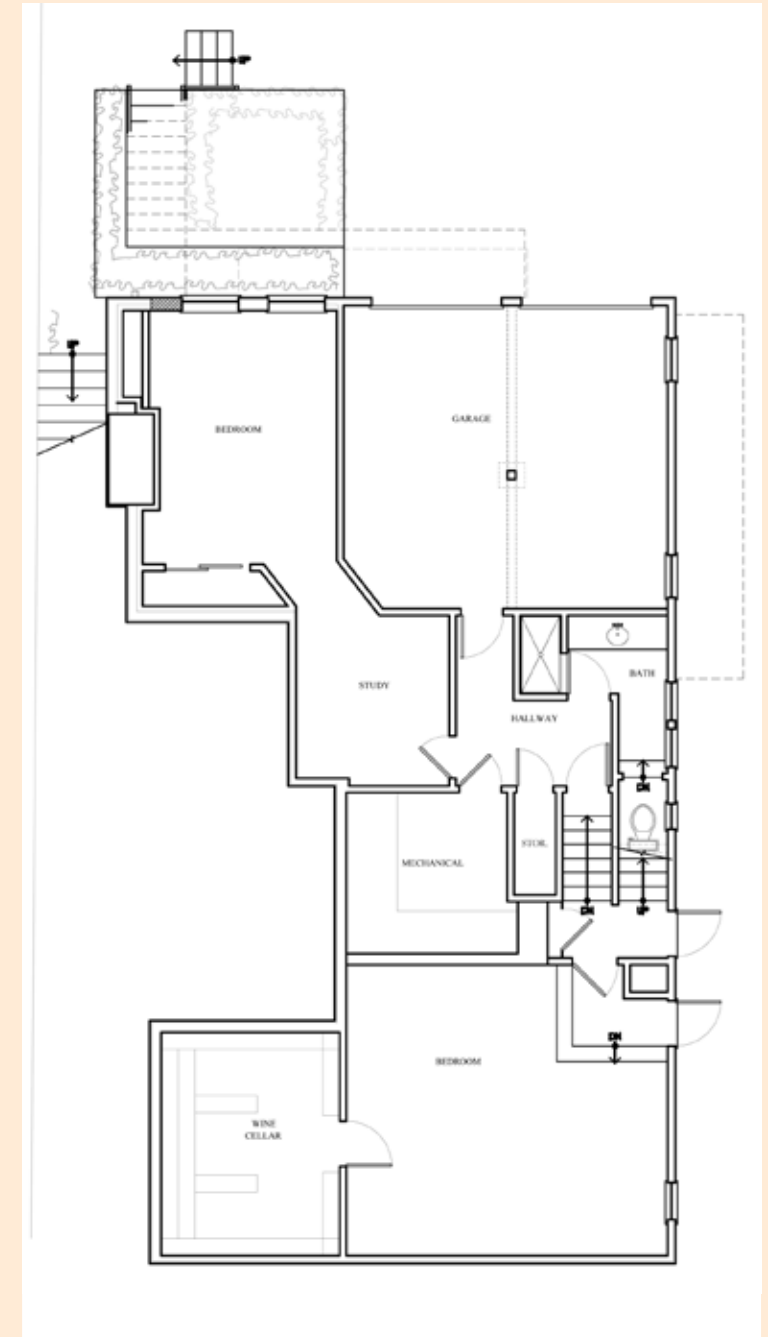
Main Level



Upper Level



Lower Level







**MALIN GIDDINGS**

415.531.5033

malin@sfproperties.com

**MAX ARMOUR**

415.290.6058

max@sfproperties.com

**TRI/COLDWELL BANKER**

1699 Van Ness Avenue

San Francisco, CA 94109